



### 徐州帝威伦新型建材有限公司

地址：江苏省徐州市泰州路申融第一街C-16号  
 电话：0516-69863066 传真：0516-86238818  
 朱总：13805221621 刘总：13626159012  
 邮箱：herman@dwellingcn.com

### Xuzhou Dwelling New Building Materials Co.,Ltd

Add : No.C-16 Shenrong Street Taizhou Road, Pizhou City, Jiangsu Province, China  
 Tel : 0516-69863066 Fax : 0516-86238818  
 General manager Zhu : 13805221621 General manager Liu : 13626159012  
 E-mail : herman@dwellingcn.com



关注帝威伦网上商城



关注帝威伦公众账号

广告服务商：力创品牌顾问 | www.lichuang.name | 400.60.96961



### 徐州帝威伦新型建材有限公司

Xuzhou Dwelling New Building Materials Co.,Ltd

科技带入建筑 绿色融入生活  
 Feel The New Life



## 目录 CONTENTS

---

- ( 01 ) 公司简介 Company profile
- ( 03 ) 资质证书 Qualification certificate
- ( 05 ) 生产设备 Production equipment
- ( 11 ) 产品特性 Product features
- ( 15 ) 设计生产流程 Process of design and manufacture
- ( 17 ) 工程案例 Show case
- ( 21 ) 样式花色 Style and color
- ( 27 ) 加盟介绍 Joining introduction
- ( 28 ) 走向世界 Toward the world

## DWELLING

定制最理想的超轻钢之家  
customize the most ideal ultra light steel home



## 帝威伦-轻钢住宅制造商

科技带入建筑 绿色融入生活

徐州帝威伦新型建材有限公司是一家集设计、生产、安装及配套工程为一体的超轻钢集成房屋制造商。

公司坐落在中国长江三角洲经济区的江苏徐州市。徐州素有“五省通衢”之称，地理位置优越、交通便利。

公司已建立了具有国际先进水平的自动化生产线，具备生产、安装和承接各类超轻钢结构建筑物、超轻钢结构工程的能力，从结构产品生产到标准化集成制造，帝威伦在延续传统建造优点的同时进行一场科技性的变革！公司与国内知名设计院校合作，开发了性能优异的钢结构体系，具有抗震性能好、施工速度快、建筑空间大、环保无污染、可持续利用等优点，业已受到广大用户的青睐和好评。如今，在全球大力发展低碳经济浪潮的推动下，帝威伦正在改变着人们对精品房屋的认识。

徐州帝威伦新型建材有限公司旗下有上海同宝实业有限公司、徐州佰盛金属制品有限公司两家子公司。上海同宝实业有限公司成立于2009年，是以钢材加工，仓储配送为一体的综合型贸易公司。徐州佰盛金属制品有限公司成立于2003年，主要负责彩涂、镀锌、镀铝锌、压瓦、超轻钢结构、内外墙挂板、电缆桥架等产品的进出口业务。

“科技带入建筑，绿色融入生活”，帝威伦凭借优良的品质和优质的服务赢得了众多海内外客户的青睐，产品投放市场以来畅销国内外。

发展没有尽头，进步没有终点，帝威伦承诺为客户定制最理想的超轻钢之家！



## DWELLING -LIGHT STEEL HOUSE MANUFACTURER

Feel The New Life

Xuzhou Dwelling New Building Materials Co.,Ltd is a Ultra light steel integrated house manufacturer which combines the functions of design, production, assembling and accessories project.

Dwelling is located in Xuzhou City, Jiangsu province, China's Yangtze river delta economic zone. Xuzhou is known as the "five provinces thoroughfare" (to the east, is Lianyungang port, to the north are Tianjin port, Qingdao port, to the south is Shanghai port. At the confluence of the Jinghang canal, Jinghu, Jinglu, Lianhuo expressway). It is well-located and easy of access, with a ascendant geographical location and convenient transportation.

Dwelling has established the international advanced level of automatic production line, with a capacity of production, assembling and undertake various ultra light steel structure construction, ultra steel project. From the production of structural products to the standardization of integrated manufacturing, Dwelling is undergoing a scientific and technological change on the basis of the advantages of traditional construction. Dwelling developed a performance of steel structure system with domestic famous design institute, the system has many advantages such as earthquake resistance, short construction period, large space, environmental protection and sustainable utilization, has won the majority of users of the praise and trust. At present, under the impetus of Developing low-carbon economy in the world, Dwelling is changing cognition of refined house.

Xuzhou Dwelling New Materials Co., Ltd set up 2 branches, Shanghai Tongbao Industrial Co., Ltd founded in 2009 is an integrated trading company which includes steel product processing and storage and distribution. Xuzhou Powerson Metal Co., Ltd was founded in 2003, which was principally engaged in import and export business of PPGL, GL, GL, corrugated steel, Ultra light steel structural steel, wall panel and cable bridge.

"FEEL THE NEW LIFE", Dwelling has won numerous domestic and overseas customers relying on excellent quality and high quality service, our products are popular in domestic and foreign market. There is no end in development and progress, Dwelling promises to customize the most ideal ultra light steel home for our customers!







## 企业资质

### ENTERPRISE QUALIFICATION

耀眼光华，见证荣耀。荣誉，是一种肯定，更是一种鼓舞。每一份赞誉，都让我们更有信心，更坚定执着。成功之路，与您一起见证，激励超越，实现更多梦想。

Brilliance bright, glory witness. Glory is a kind of affirmation, but also an inspiration. Every praise, give us more confidence, more determined perseverance, witness the road to success together with you, beyond motivate, more dreams will come true.





## 设备精良 技术导航

公司引进国内外先进设备，已建立了具有国际先进水平的自动化生产线，具备生产、安装和承接各类超轻钢结构建筑物。超钢构工程的能力，从结构产品生产到标准化集成制造，帝威伦在延续传统建造优点的同时进行一场科技性的变革！



### SOPHISTICATED EQUIPMENT

Dwelling introduces advanced equipment at home and abroad, established automated production line with international advanced level, have an excellent ability to the production, assemble and undertake various ultra light steel structure buildings and ultra steel structure engineering, from the structure products to the standardized integrated manufacturing, at the time of continuation of traditional building, Dwelling is leading a technological revolution!

## 品质为先，精益求精

公司在引进设备的同时，注重技术开发，引进先进技术，不间断培养技术人才，保证产品质量不断更新，跟进国际水准，满足市场需求。



## QUALITY FIRST, STRIVE FOR PERFECTION

At the time of equipment introduction, pay attention to technology development, introduction of advanced technology, keep training technical talents, guarantee the quality of the products constantly update, follow the international standard, meet the market demand.

帝威伦 / 07 / 08

定制超轻钢之家 customize the most ideal ultra light steel home





## 设备领先 品质卓越

优秀的产品质量是帝威伦的基石。公司生产过程已经实现全程现代化、科学化，按照ISO-9001进行技术控制，细致周密的质量管理体系实现了帝威伦全面的质量管理。对产品质量的精益求精，使帝威伦产品拥有最为强劲的企业核心竞争力。



帝威伦 / 09 / 10  
定制最理想的超轻钢之家 customize the most ideal ultra light steel home

## SOPHISTICATED EQUIPMENT

Excellent product quality is the foundation of Dwelling. Productive process has achieve modernization, scientization, technical control is according to ISO-9001, subtle careful quality control system achieves the Dwelling's comprehensive quality management.Keep improving the quality of product, made Dwelling's products have the strongest enterprise core competitiveness.



## 轻钢集成房屋性能



### 节能环保

轻钢结构可100%循环利用，献钢于民意义重大。性能优良的墙面、屋面组合方案，提供卓越的保温、隔音、防水性能，与传统砖混结构相比耗能减少65%。现场干作业，可以有效控制施工过程中引起的大气污染、土壤污染、水污染及对现场周围环境的各类影响，并有效减少废弃物的产生。

### 预制化程度高，像造汽车一样造房

整个轻钢集成房屋中的所有建材都可以实现工厂化预制，机械化程度高，真正实现住宅工业化。

### 自重轻、用材省

结构材料强度高，厚度薄，用钢量省（通常低层房屋总体用钢量在30kg/m<sup>2</sup>以内，多层建筑用钢量在40kg/m<sup>2</sup>左右），房屋的整体自重轻，仅为传统砖混结构的1/4左右。结构重量降低了运输和吊装费用，基础负载也相应减少，降低了基础造价。对地基要求低，尤其适合山地、河滩、沙地、海岛等地形复杂恶劣区域。

### 安全耐用

墙体及屋架结构与内外墙板组成坚固的“板肋结构”，抗水平荷载和垂直荷载的能力大大提高，故抗震、抗风性能好。经过试验证明，可抵抗9°罕遇地震，抵抗70m/s的飓风。

结构构件全部采用热镀锌（铝）锌钢板，装配时采用自攻螺钉，不需焊接，因此其抗腐蚀性性能极佳，再加上所有结构构件全部封闭在不透水气的复合墙体内部，不会腐蚀、不会霉变、不怕虫蛀，建筑物使用寿命在70年以上。

### 居住实用、舒适

由于使用了优良的保温隔音节能结构和材料，使其室内的居住舒适程度大大提高。管线内置以及墙体变薄有效提高了房屋的使用面积（约增加10%）。再加上钢结构可塑性强的特点，使得房屋造型可以复杂、多样、美观。

### 节点成熟、配套齐全

先进技术的引进以及多年的实践，我公司具备了完善、成熟的技术体系，并形成了稳定、全面的配套材料供应链。

## PROPERTY OF LIGHT GAUGE MODULAR HOUSE

### ENERGY SAVING AND ENVIRONMENT PROTECTION

Light steel is 100% recycling, steel in the people is great significance. Good performance of the walls and roof combination, provide excellent thermal insulation, sound insulation, waterproof, compared with the traditional brick structure energy consumption reduced by 65%. Can effectively control air pollution, soil pollution, water pollution and environment on the spot, and effectively reduce the generation of waste

### HIGH DEGREE OF PREFABRICATING, LIKE MAKING CAR

All the materials can realize workshop prefabrication, high mechanization degree, truly achieve residential industrialization.

### LIGHT WEIGHT, SAVING MATERIAL

Structural material with high intensity, thickness thin, ( Usually low-rise housing total steel quantity within 30 kg/m<sup>2</sup>, multi-storey building is 40 kg/m<sup>2</sup> ), the whole weight of the building is only about 1/4 of the traditional brick structure. Structure light weight reduce the cost of transportation, hoisting, and foundation cost. Low requirement to the foundation, especially suitable for mountain and the beach, sand, island and so on.

### SAFE AND DURABLE

Wall&roof structure and the internal&external wall, Ability to resist horizontal load and vertical load is greatly increased, so the seismic and wind resistance performance is good. After tests showing that, can resist 9° earthquake, resist hurricane of 70 m/s. Components are all made of hot dipped zinc (aluminum) steel plate assembly by the self tapping screw, need't to welding, So it's excellent corrosion resistance, The service life of the building more than 70 years.

### PRACTICAL, COMFORTABLE TO LIVE

Due to the use of the excellent heat preservation, sound insulation energy-saving structure and material, make its indoor comfort level greatly increased. Pipeline internal and wall thinning improve the use of housing area increased (about 10%). Combined with the plasticity of the steel structure, making the house complex, diverse, beautiful shape.

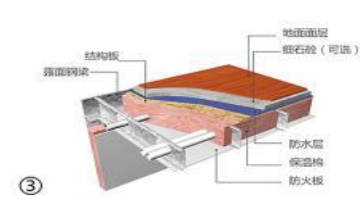
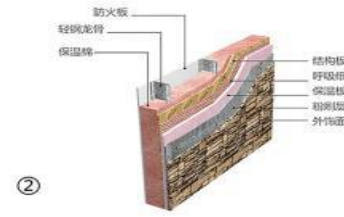
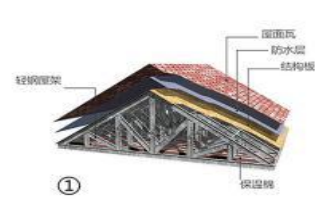
### MATURE TECHNOLOGY, COMPLETE EQUIPMENTS

The introduction of advanced technology and years of practice, our company has the perfect and mature technology system, and formed a stable, comprehensive materials-supply chain.

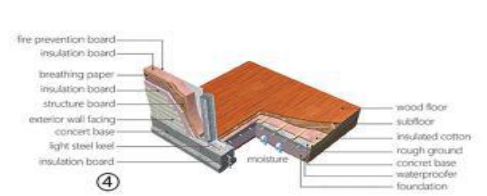
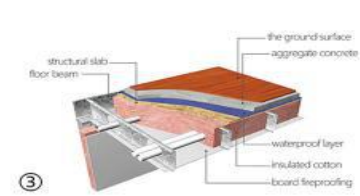
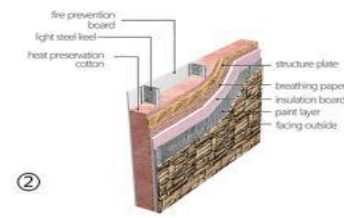
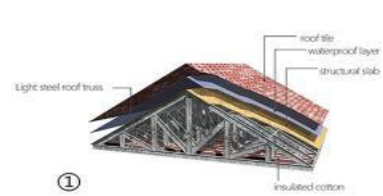
帝威伦 / 11 / 12

定制最理想的超轻钢之家 customize the most ideal ultra light steel home





帝威伦 / 13 / 14  
定制最理想的超轻钢之家 customize the most ideal ultra light steel home

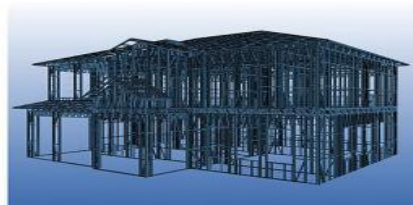


## 设计生产流程

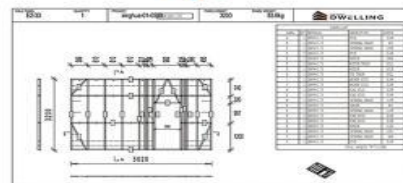
PROCESS OF DESIGN AND MANUFACTURE



1. 您只需提供个性化的建筑要求  
provide personalized construction requirements



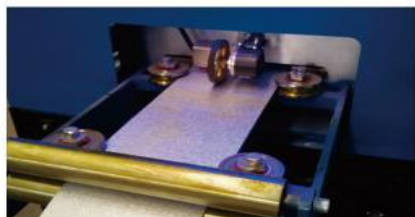
2. 我们为您设计房子结构 Design house for you



3. 设计软件会告诉设备做什么  
Design software will show the detail



5. 生产的构件打包  
packaging of the components



4. 高精度的生产设备保证产品质量  
High-precision equipment to ensure quality

# DWELLING

LIGHT STEEL HOUSE MANUFACTURER

## 帝威伦-轻钢住宅制造商

帝威伦承诺为客户定制最理想的超轻钢之家！



帝威伦 / 15 / 16

定制最理想的超轻钢之家 customize the most ideal ultra light steel home





**案例展示** SHOW CASE



帝威伦 / 17 / 18  
定制最理想的超轻钢之家 customize the most ideal ultra light steel home





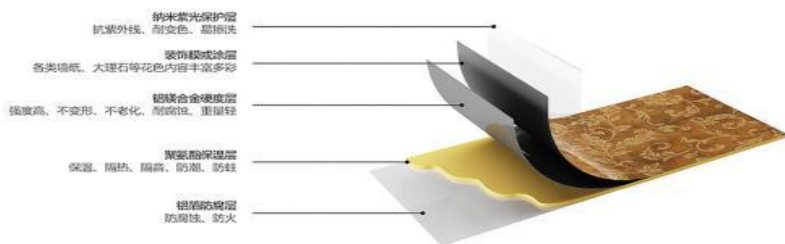
## 案例展示 SHOW CASE





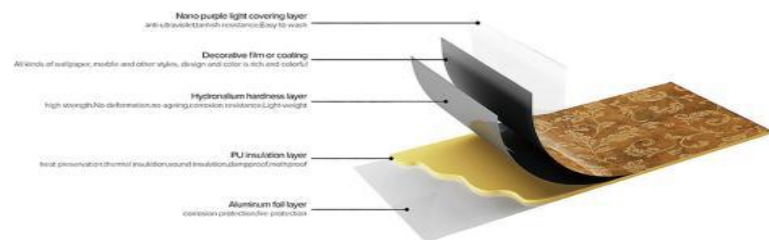
## 内墙板

帝威伦金属内墙挂板主要由表面为铝板，中间层为特殊防火处理硬质发泡聚氨酯，底层为玻璃纤维布，这三个部分组成，防火等级为B1级。内墙板规格为：厚度10mm，宽度300mm，320mm，450mm，长度为3000mm，6000mm。



## INTERNAL WALL PANEL

Dwelling Panel consists of three layers: the top is aluminium plate, the core material is hard polyurethane foaming (for insulation), the back layer is glass-fiber paper or aluminum foil paper, fire-protection rating is B1. Internal wall panel thickness is 10mm, width is 300mm, 320mm, 450mm, length is 3000mm, 6000mm.



## 样式花色 STYLE AND COLOR



DWL-百合



DWL-祥云



DWL-凤凰城



DWL-郁金香



DWL-欧式大花



DWL-睡莲



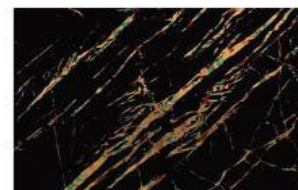
DWL-银丝连绵



DWL-木纹B



DWL-木纹A



DWL-黑金石



DWL-棕玉银丝



DWL-山石纹路



## 内墙板案例

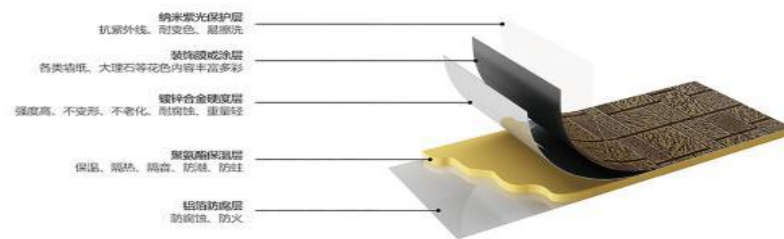
帝威伦金属内墙挂板在功能和产品构造上具有历史颠覆性，具有保暖隔热，易装修、隔音、防火、节能环保，装好即住。防潮防蛀、易擦洗、省空间、可回收等优势，适用于各种墙体：钢结构、砖墙、混凝土、木质墙等，可用在吊顶、护墙、隔断和电视背景、床头背景、企业形象等各类背景，产品替代了木工板、矿棉板、石膏板、五合板、墙纸、生态木以及各类吊顶铝合金扣板。完全达到装修不用油漆，省工、省时更省钱、环保。

Dwelling internal wall panel has a history of disruptive on the function and the product structure, and also have thermal insulation, easy to decorate, sound insulation, fireproofing, energy conservation and environment protection, can immediately live after decoration, moistureproof moth-proofing, easy to wipe to wash, space saving and recoverable such advantages. It's suitable for all kinds of wall body steel structure, brick wall, concrete, wooden wall and so on, can be used in ceiling, guard wall, partition, TV background wall, bed-side background wall, corporate image and such background walls, the wall panel instead of wood board, mineral wool board, gypsum board, five-layer plywood, wallpaper, ecological wood and all kinds of ceiling of aluminium alloy gusset plate, completely achieve decoration without oil paint, labor saving, time saving, money saving and also environmental protection.



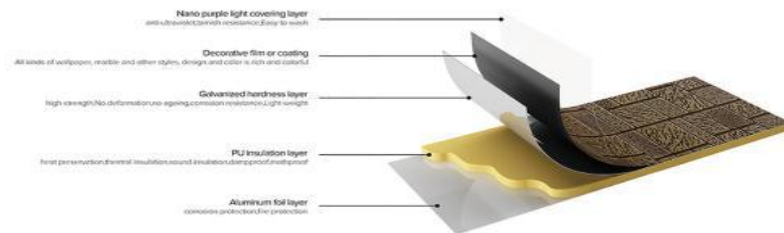
## 外墙板

帝威伦金属外墙挂板主要由表面纳米抗污技术处理的彩涂钢板，中间层为特殊防火处理硬质发泡聚氨酯，底层为玻璃纤维布这三个部分组成，防火等级为B1级。外墙板规格为：厚度16mm，宽度383mm，400mm，450mm，长度为3000mm，6000mm。



## EXTERNAL WALL PANEL

Dwelling Panel consists of three layers: the top is special aluminum-zinc coated metal board or aluminum panel, the core material is hard polyurethane foaming (for insulation), the back layer is glass-fibre paper or aluminum foil paper, fire-protection rating is B1. External wall panel thickness is 16mm, width is 383mm, 400mm, 450mm, length is 3000mm, 6000mm.



帝威伦 / 23 / 24

定制您理想的超轻钢之家 customize the most ideal ultra light steel home



## 样式花色 STYLE AND COLOR



DWL-8012



DWL-1017



DWL-7004



DWL-3012B



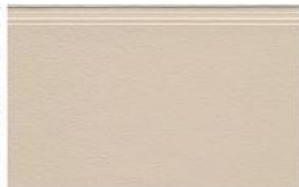
DWL-3022



DWL-7004A



DWL-7046



DWL-3015



DWL-1001



DWL-木纹2



DWL-君子兰



DWL-木纹7



## 外墙板案例

帝威伦金属外墙挂板适用于各种墙体：钢结构、砖墙、混凝土、木质墙等。主要应用于各种高档酒店、别墅、学校、居民楼等建筑的新建和改建工程。

Dwelling Panel is suitable for all kinds of wall: steel structure, brick wall, concrete wall and wooden wall. Mainly used in all kinds of high-grade hotels, villas, schools, residential buildings and other building construction and renovation projects.



## 帝威伦-加盟介绍

发展没有尽头，进步没有终点，帝威伦承诺为客户定制最理想的超轻钢之家！

招商热线：400-9623-669

轻钢别墅  
不是趋势  
已是形式  
你，还在观望？

公司为扩展业务，提高工程能力与品质，现向社会各界广泛寻求合作伙伴，征寻具有一定实力及支持轻型钢建筑发展的队伍，在与本公司洽谈成功后将签订长期合作合同，并建立伙伴关系，有意者请来电！



## 致力于成为中国 舒适家居生活领导者

帝威伦不断的技术创新、在实践中总结，总结中发展，我们追求完美、追求卓越，致力于科技改变生活，秉承人与自然和谐发展的理念，呈现产品的安全、环保、健康、舒适、真正实现低碳生活。

### COMMITTED TO BE THE LEADER OF COMFORTABLE HOMELIFE

Dwelling continuous technological innovation, summarizes in the practice, develops in summaries. Creates perfection, seeks excellence. Dwelling aims to change life through technology. Dwelling holds the idea of harmonious development of man and nature, to give people safe, environment-friendly, healthy and comfortable products and to achieve low carbon living.



## 源自国际 面向世界

为了满足世界绿色、低碳建筑的市场需求，顺应中国住宅产业化发展趋势，帝威伦事业部从芬兰引进国际领先的全套冷弯薄壁型钢生产线及技术。软件具有强大的设计和结构计算功能，可满足中国、澳洲、美洲、欧洲、英国等设计规范。目前产品已成功销往东南亚、中亚、澳洲、中东、非洲、北美、南美等世界不同国家及地区。

### FROM THE INTERNATIONAL, FOR THE INTERNATIONAL

In order to meet the market needs of world green, low carbon buildings, conform to the development trend Chinese housing industrialization, Dwelling business division introduced international leading production line and technology of full set cold formed steel from Finland. The software has strong functions of design and structure calculation, can meet China, Australia, USA, Europe, UK and other design specifications.



帝威伦 / 27 / 28

定制最理想的超轻钢之家 customize the most ideal ultra light steel home